



SMART STATIONS IN SMART CITIES

6th International Conference on Railway Stations

Madrid, 19-21 OCTOBER 2017

Development of the Area to the North of Osaka Station Utilizing the Former Umeda Freight Depot (Umekita Urban Development) and the Project to Build a New Station and Undergrounded Section of Track Necessary for Urban Development

Naoko Fukase

West Japan Railway Company, Japan



Osaka's location



The Kinki region around Osaka



Kobe Port (Kobe)



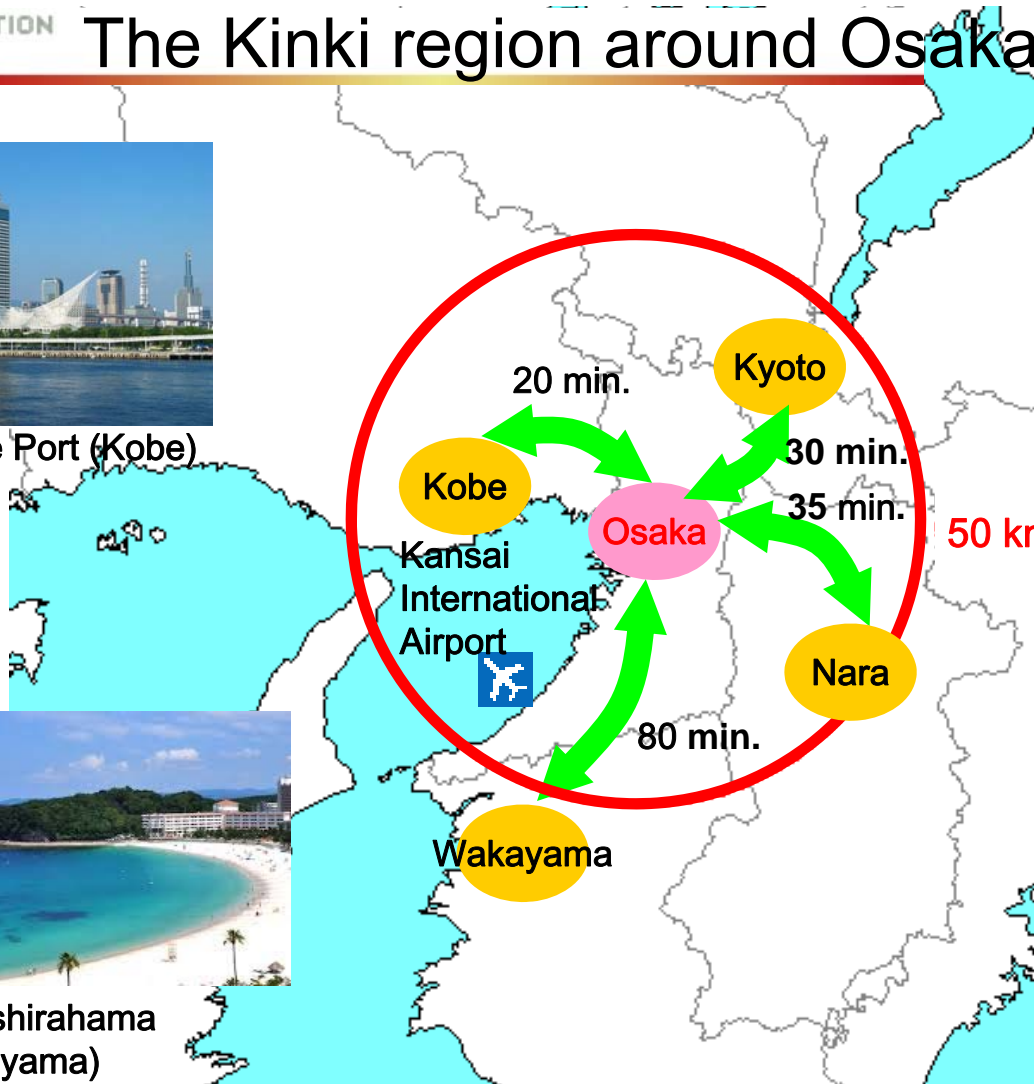
Kinkakuji Temple (Kyoto)



Nankishirahama (Wakayama)



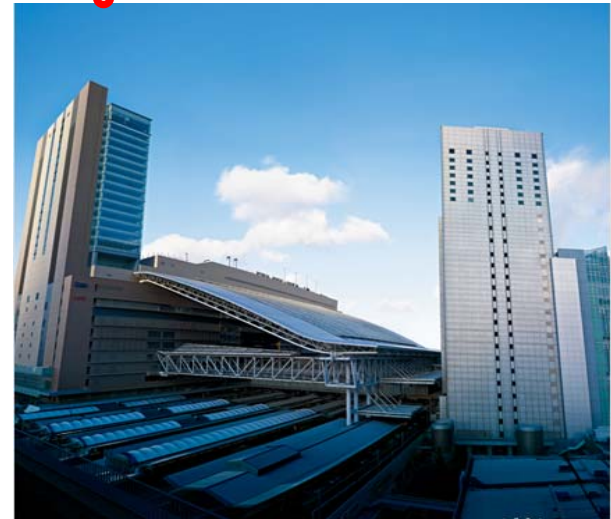
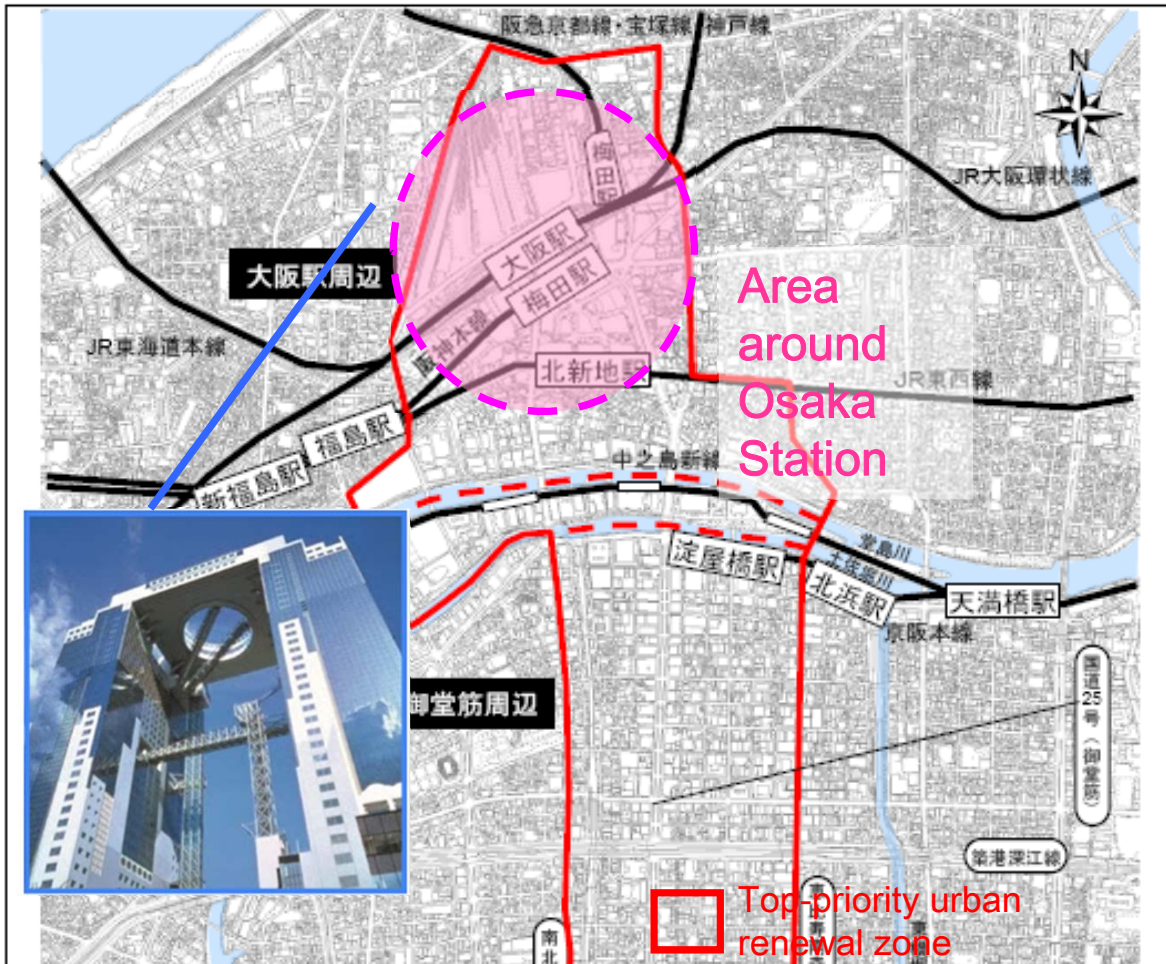
Daibutsu (Nara)



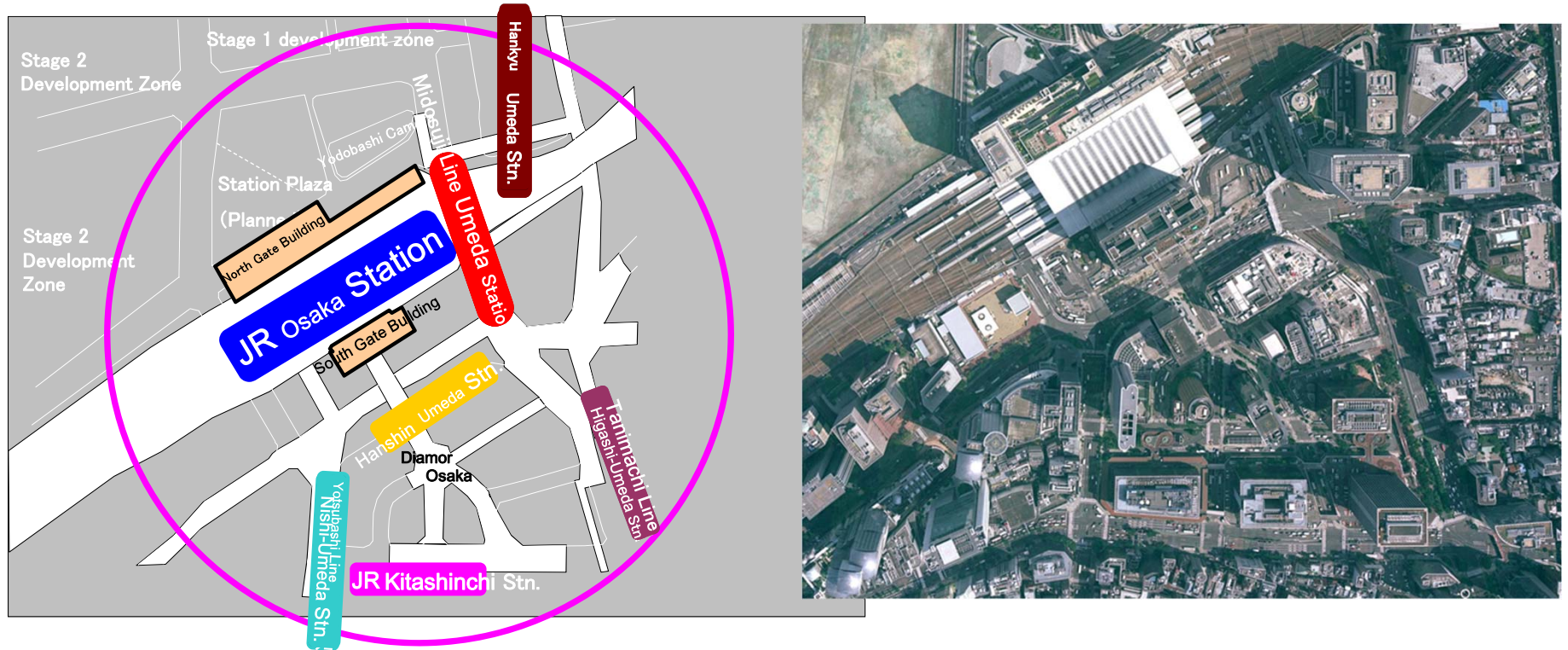


Urban Renewal in Central Osaka

Osaka Station City
Opened in May 2011



The Area around Osaka Station



Around 2.5 million passengers per day

The Area around Osaka Station

2011

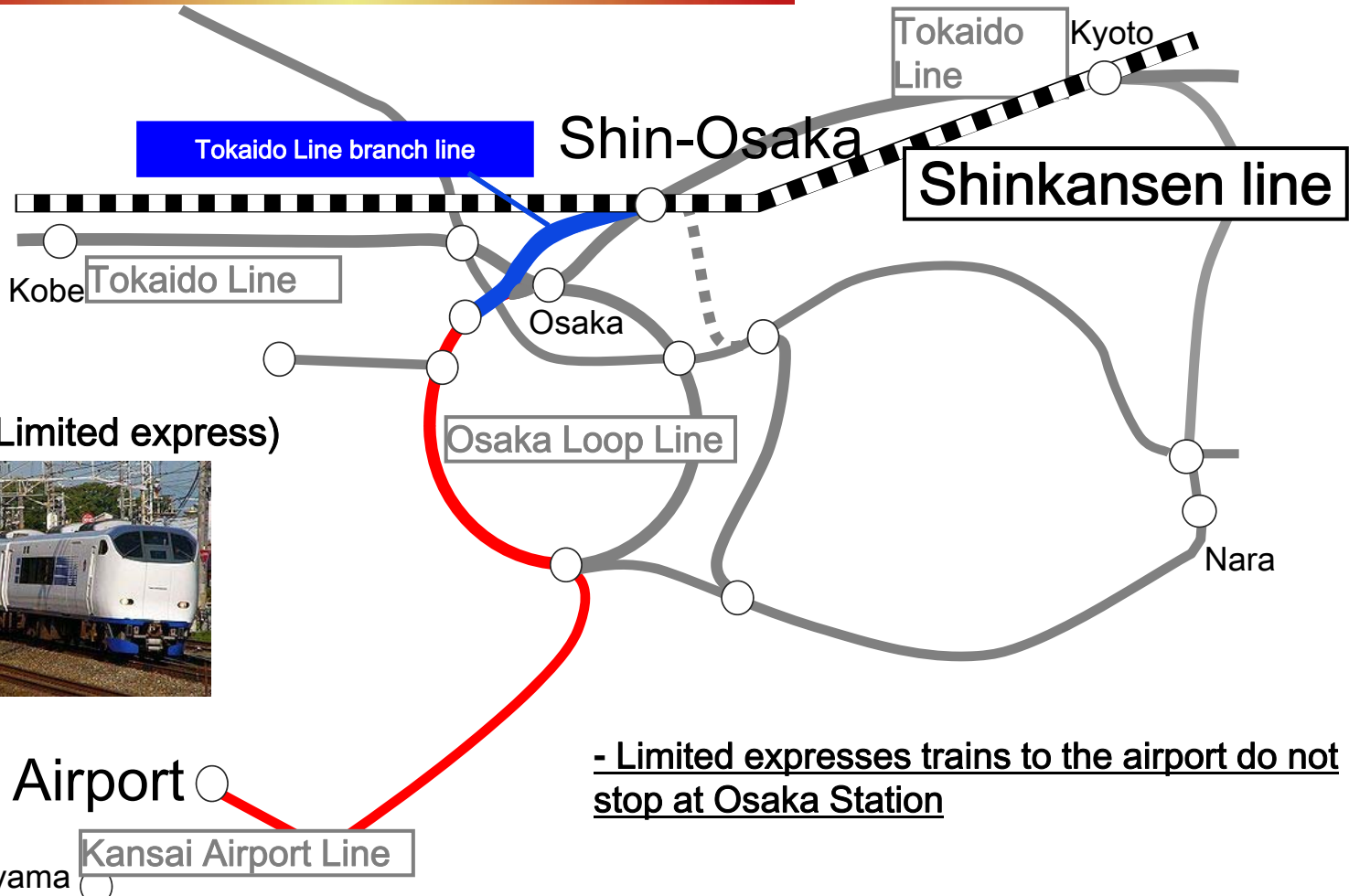


2015





Tokaido Line feeder line



HARUKA (Limited express)



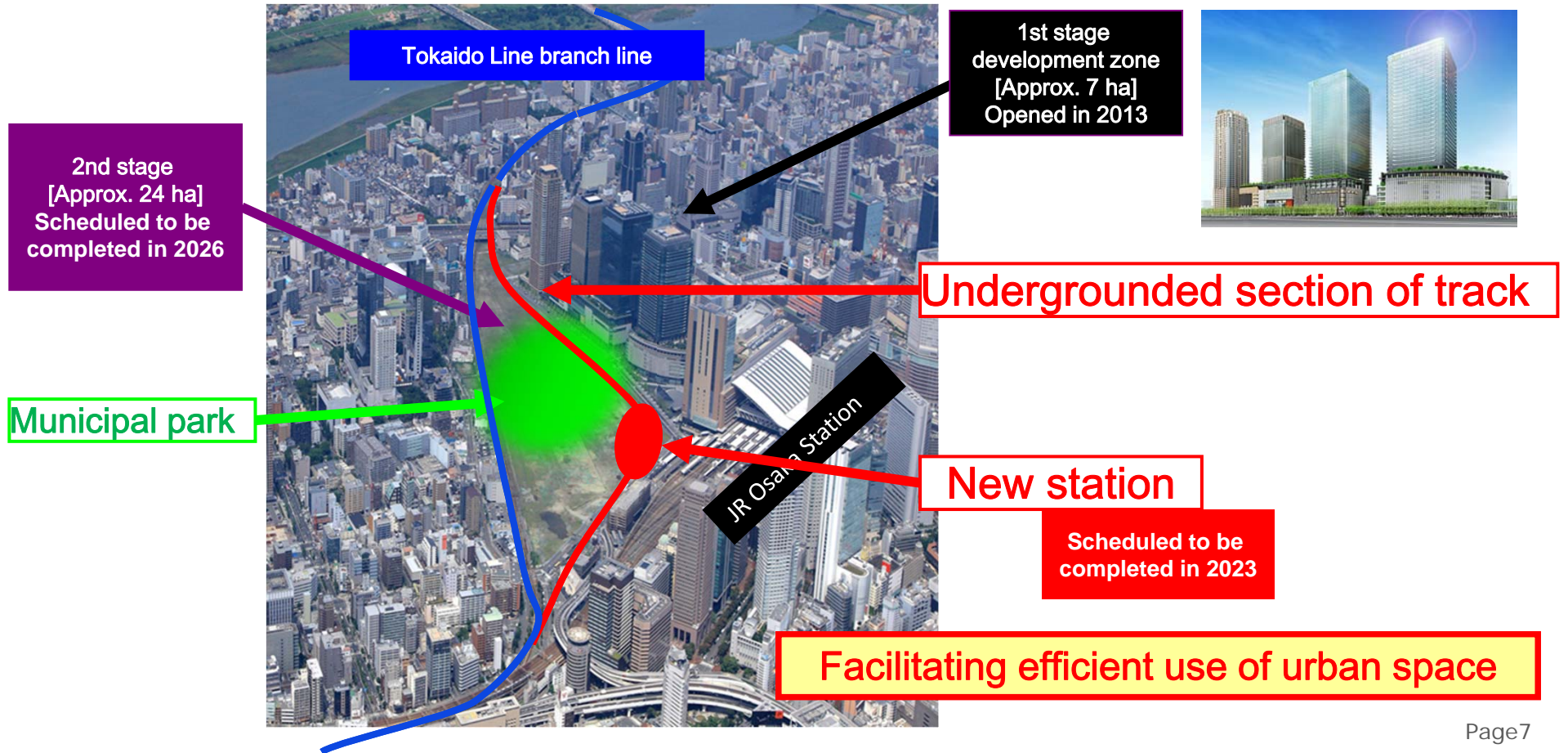
Kansai Airport ○

- Limited expresses trains to the airport do not stop at Osaka Station

Wakayama ()
Kansai Airport Line



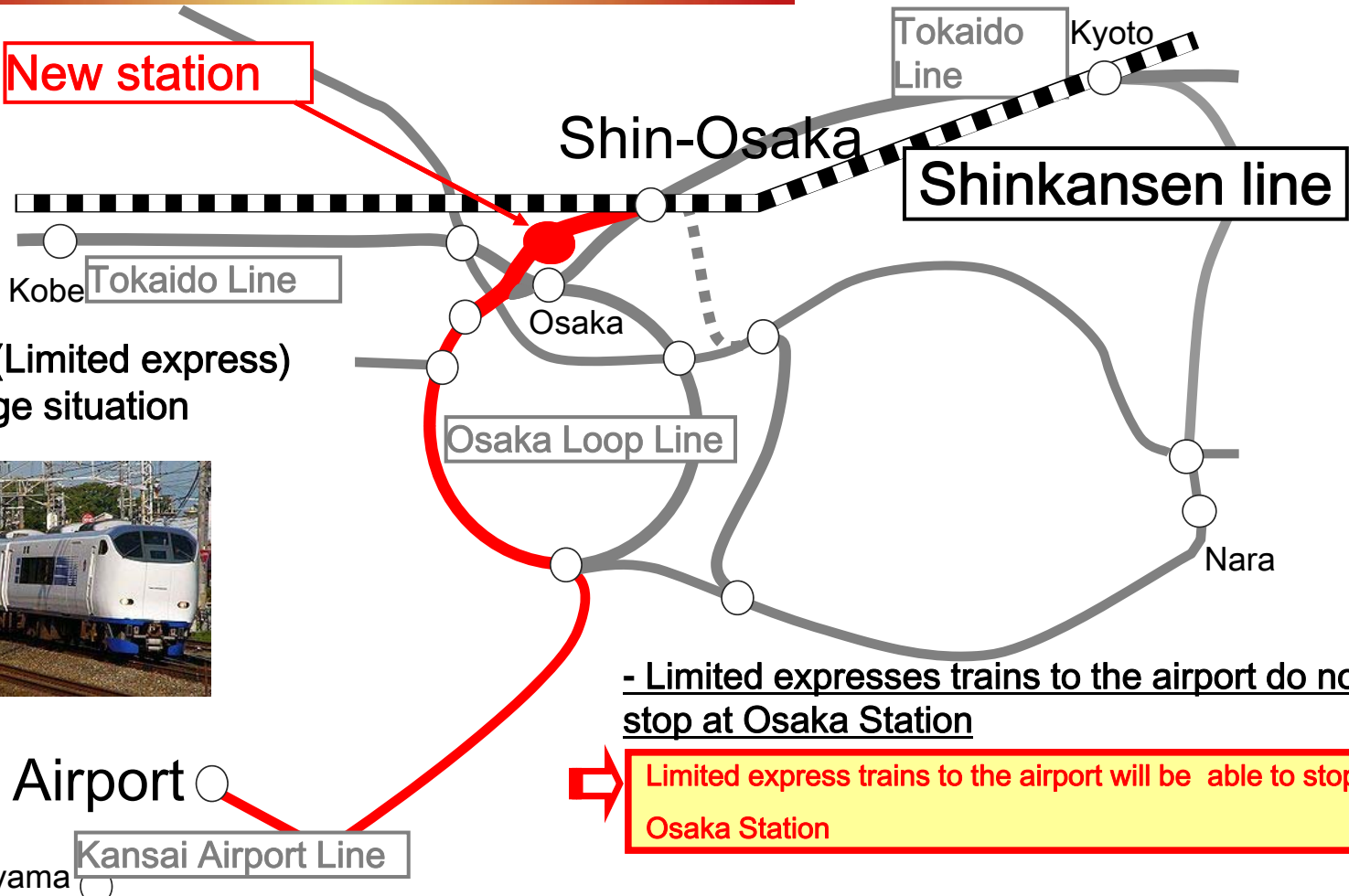
The Undergrounded Section of Track and New Station





The effect of the new station

New station



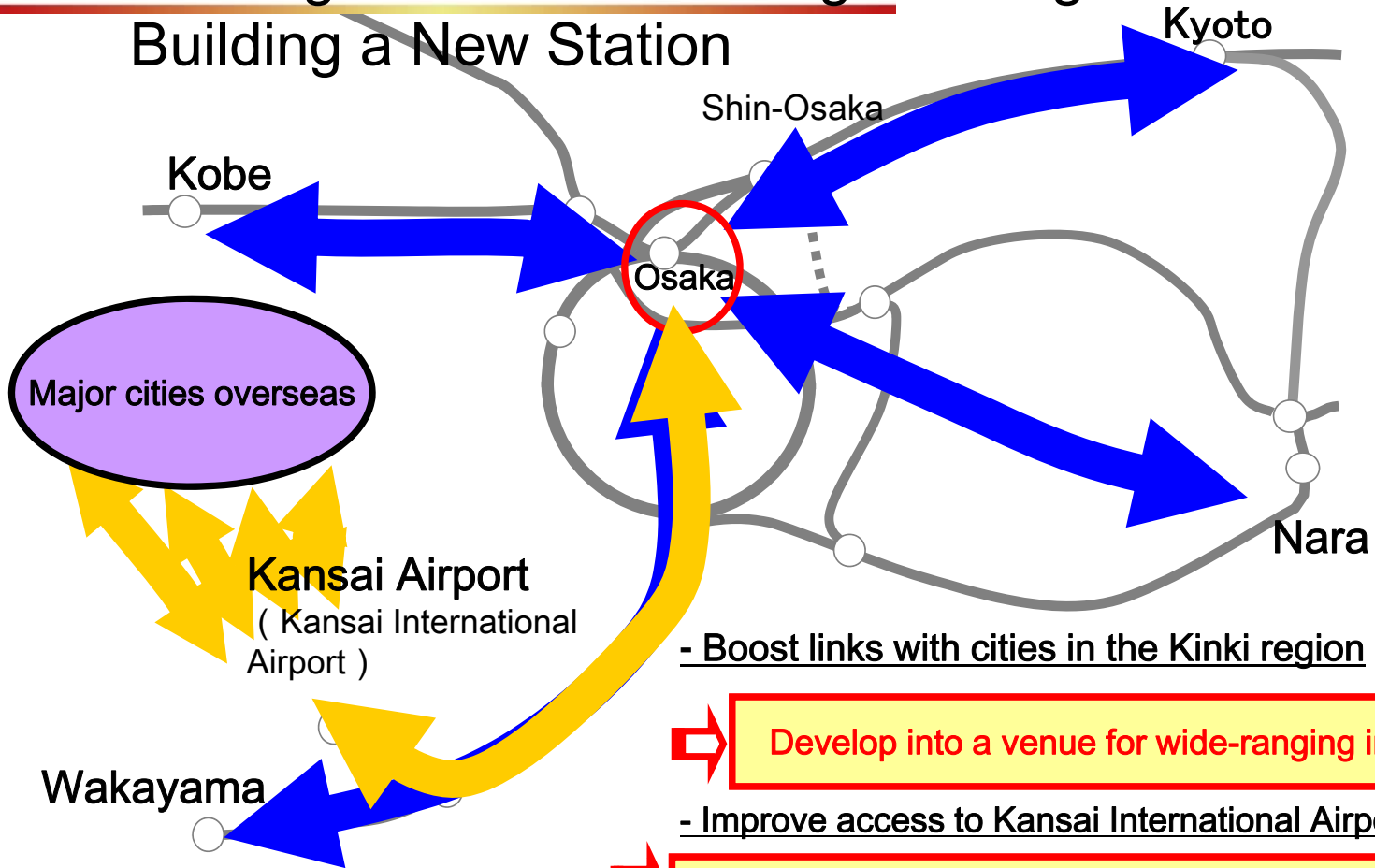
HARUKA (Limited express)
Usage situation



- Limited expresses trains to the airport do not stop at Osaka Station

Limited express trains to the airport will be able to stop at Osaka Station

The Significance of Undergrounding the Track and Building a New Station



- Boost links with cities in the Kinki region

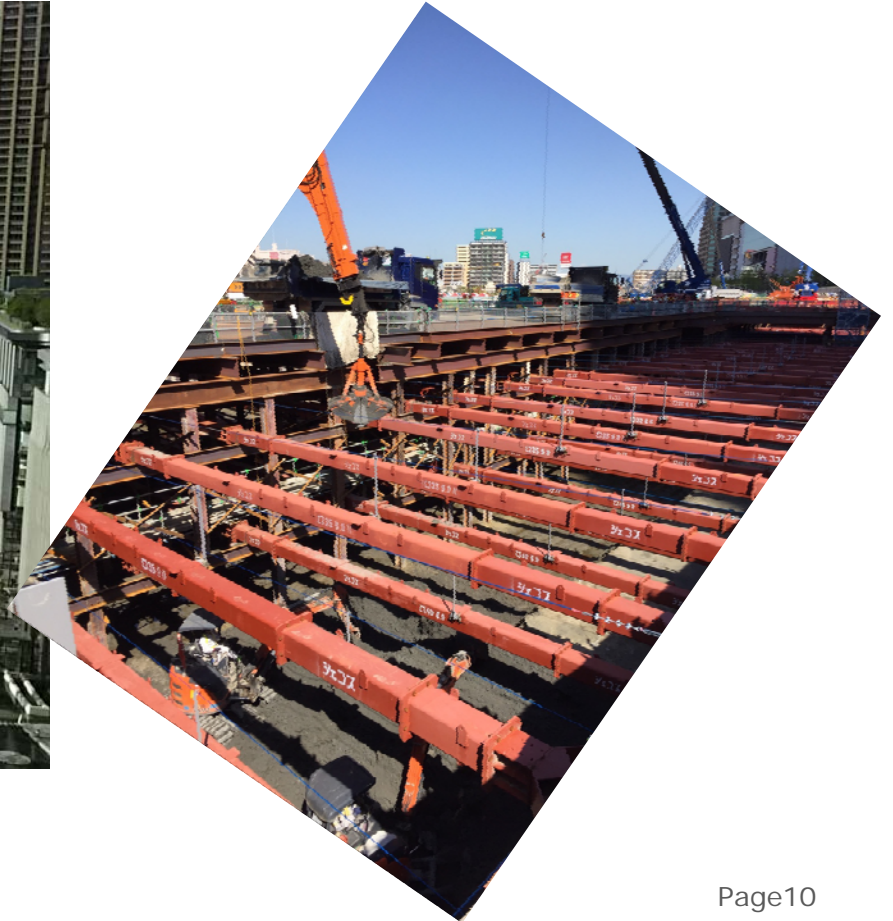
➡ **Develop into a venue for wide-ranging interactions**

- Improve access to Kansai International Airport

➡ **Strengthen function as a gateway to the global community**



The current state of the site





SMART STATIONS IN SMART CITIES

6th International Conference on Railway Stations

Madrid, 19-21 OCTOBER 2017

Thank you very much for listening.