

nextstation
PARIS 2007

6 & 7 décembre 2007

2^{ÈME} CONFÉRENCE INTERNATIONALE
SUR LES GARES FERROVIAIRES



Next Station

*2^{ème} conférence internationale
sur les gares ferroviaires*



nextstation
PARIS 2007

6 & 7 décembre 2007

2ÈME CONFÉRENCE INTERNATIONALE
SUR LES GARES FERROVIAIRES



The UK Passenger Rail Industry

*John French - Director
Transport Regeneration Ltd*



The UK Passenger Rail Industry

1995 British Rail

2008 Arriva Trains Wales

C2C

Chilton Railways

Cross Country

East Midlands

First Capital Connect

First Great Western

First Scotrail

Gatwick Express

Intercity East Coast

London Midland

Merseyrail Electrics

Northern Rail

One Railway

South West Trains

Southeastern

Southern Railway

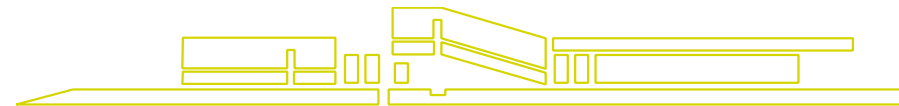
Transpenine Express

Virgin West Coast



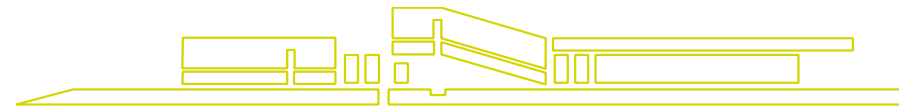
Average Station – Typical range of tenants

- The main operator (most operators commence with an approximate seven year franchise)
- Other operators serving the station
- Various retail outlets
- Third parties renting surplus office and other space



Two frequent barriers to implementation

- Limited franchise period (operators have minimal time to develop partnerships and secure pay back on investment)
- Shared Metering



The Eco Branch Line



Approximate
Area of Eco
Branch Line



Wind Turbine - Salhouse



Electrical connection



Electrical connection (not so easy)



Old Station



Fit for purpose?



Fit for purpose?



Burnley Central - Accrington



Accrington Eco Station



Approximate
location of
Accrington Eco
Station



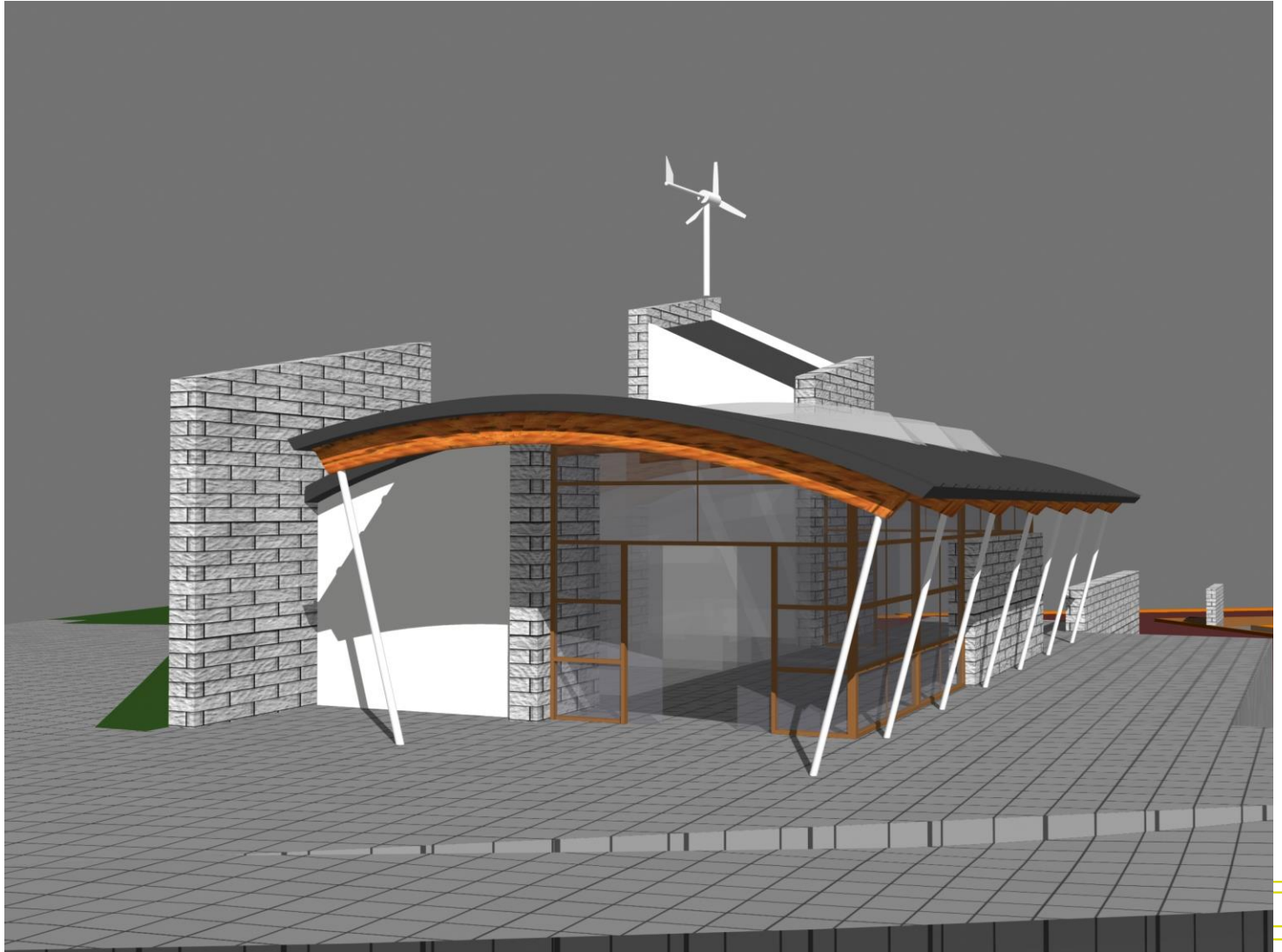
Accrington Station



Future Accrington Station



Future Accrington Station



nextstation
PARIS 2007

6 & 7 décembre 2007

2^{ÈME} CONFÉRENCE INTERNATIONALE
SUR LES GARES FERROVIAIRES



Next Station

*2^{ème} conférence internationale
sur les gares ferroviaires*

