



AUDIOGUIDE PROJECT: Guiding visually impaired people through stations

17-18 October 2013

Mr. Javier Dahl Sobrino
Technical Assistant Manager, ADIF, Spain
1-B Innovations

Content

2

- **Aim.**
- **Making the most out of Guide Paths.**
 - Design.
 - Implementation.
- **AudioGuide:**
 - Interactive Information Points.
 - Technology.
 - Operation.
 - Implementation.

Aim

3

- **AudioGuide Project** consists in a new software development that will improve stations universal accessibility giving a high quality service to disabled users, especially to visually impaired collectives.
- The objective is that this collective can be as **autonomous** as possible during their access, stay and transit through stations.
- To be fully functional the AudioGuide Project is supported, in stations, by specific devices called **Interactive Information Points** placed along the **Guide Paths**.

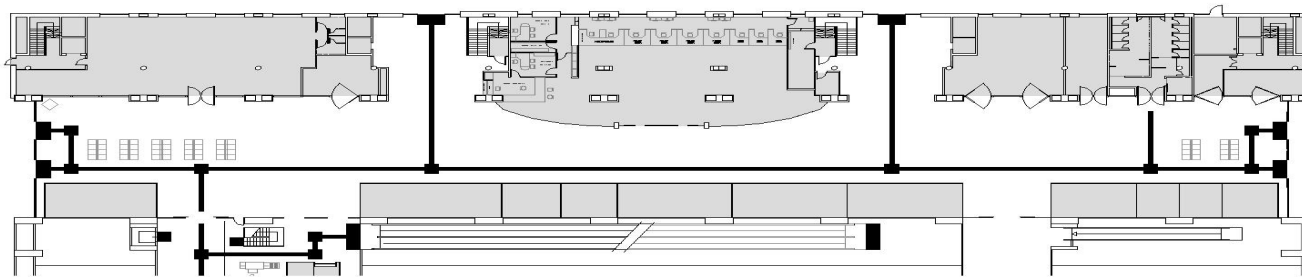


Making the most out of Guide Paths

4

CURRENT AND FUTURE

- As part of ADIF's accessibility strategy, **Guide Paths** are being installed in stations.
- Guide Paths differentiated pavement becomes a **connection** line between the main station areas and facilities.
- Placing **Interactive Information Points** with the Audioguide Software in these strategic locations, enhances the purpose of guide paths.



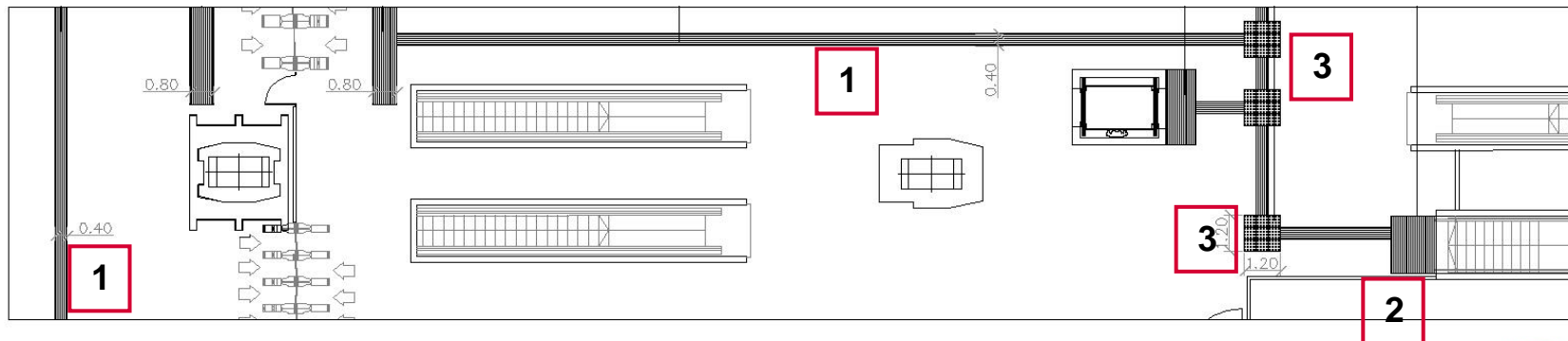
Mr. Dahl Sobrino – ADIF – Audioguide Project

17-18 October 2013

Guide Paths: Design

5

- **Guide Paths** are formed by different types of pavements:
 - 1 □ Path Pavement with longitudinal grooves in the walking direction. Width = 40cm.
 - 2 □ Caution Pavement with perpendicular grooves to the walking direction. Width = 80 – 120cm.
 - 3 □ Turn Pavement with buttons. Dimensions = 120 x 120cm.



Guide Paths: Implementation

6

	Guide Paths in Stations	Passengers (2012 data)	Budget
PHASE 1 (finished)	18	55%	550.000 €
PHASE 2 (under construction)	42	23%	630.000 €
PHASE 3 (under planification)	40	22%	620.000 €
TOTAL	100	100%	1.800.000 €

AudioGuide: Interactive Information Points

7

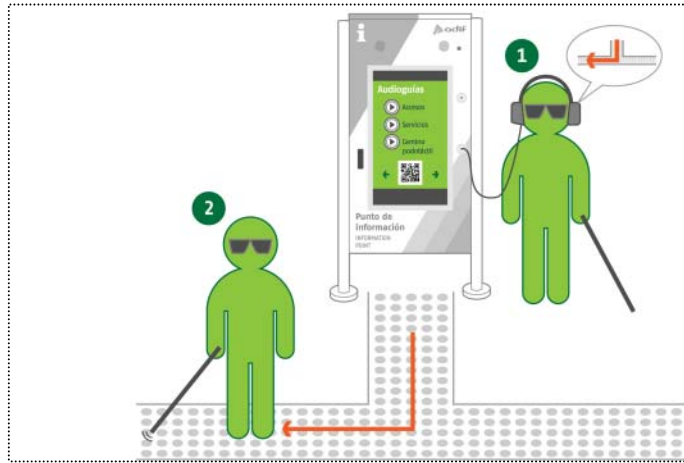


- ❑ **Interactive Information Points (IIP)** are the physical devices that will contain the AudioGuide Software. There are already **30 IIP in 17 Spanish Stations** to provide customers and passengers, in an interactive way, station and train schedules information.
- ❑ **IIP** are Fully Accessible for all Disabled Collectives:
 - ❑ Physically impaired: IIP are easy to use from a wheelchair since the control touch screen height is adjusted.
 - ❑ Visually impaired: equipped with braille buttons and audible handling and contents.
 - ❑ Hearing impaired: equipped with magnetic induction loop.

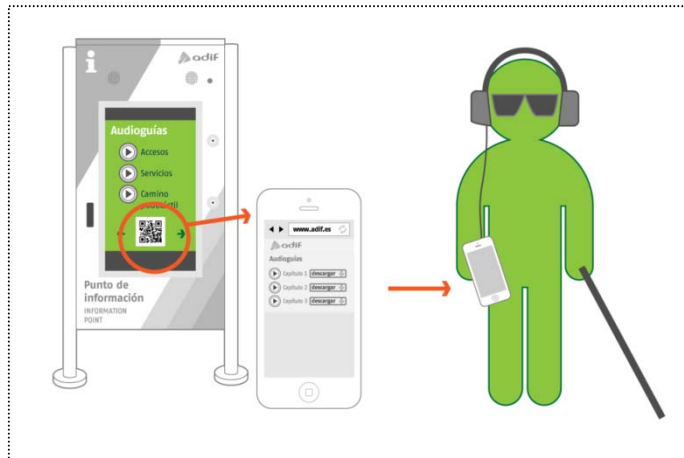
ACCESIBILITY = INFRASTRUCTURE + TECHNOLOGY

AudioGuide: Operation

8



- The **AudioGuide** messages can be listened using standard headphones **from IIP's** located in stations.
- IIP will provide a function, by means of audible descriptions **to guide** visually impaired people using guide paths, **to the main station facilities.**



- It will be possible to download the AudioGuide from internet **to listened it on mobile devices.**

Audioguide: Technology

9



- **The AudioGuide Project can provide the following information via properly structured audio files.**
 - Access information.
 - Location of station main services. Moving around the station.
- **The AudioGuide Implementation:**
 - First phase: **Madrid Chamartín and Madrid Puerta de Atocha Stations**

AudioGuide: Implementation

10

- The AudioGuide Software will be available from:
 - ADIF's website: www.adif.es
 - Interactive Information Points (IIP).
 - Mobile/tablet app "Station in your pocket".



Mr. Dahl Sobrino – ADIF – Audioguide Project

17-18 October 2013



Audioguide: Implementation

11



Mr. Dahl Sobrino – ADIF – Audioguide Project

12

...Thank you

for your kind attention

Javier Dahl Sobrino
Architect
Technical Assistant Manager,
Directorate of Passenger Stations, ADIF
jdahl@adif.es
www.adif.es